

April 2006

THE GRID LEAK

The Official Newsletter of the Tulare County Amateur Radio Club

P.O. Box 723, Visalia, CA 93279
TULARE COUNTY, CALIFORNIA
146.880 (-) TCARC REPEATER
Park Ridge Mountain
East of Fresno, California
36 43.29' N Latitude, 118.56.38' W Longitude
7,500' above Sea Level

I.R.L.P. Node # **8120**

Echolink Node # **152747** (WA6BAI-R)

Web Page: <http://www.tcarc.net/>

Companion site at: <http://groups.yahoo.com/group/wa6bai/>

Club Officers

President: Dave McElroy WA6BEF

Vice President: Bill Stenger K6QOG

Secretary: Ray Quinn KF6KMY

Treasurer: Dave Millhouse N6YMM

Past President: Steve Lee-Thomas W6SLT

Repeater Liaison: Chuck Ward WA6SAA

Activities Director: Hal Clover KC5LUB



**Next Club Meeting is April 27th, 7:30 pm
Country Board of Supervisors,
2800 Burrell, Visalia, CA.**

The Club meetings have changed location!!

The meetings have returned to the County Board of Supervisor's Building, 2800 Burrell, Visalia. It is located West of the court house.

President's Message

Hello from south Visalia.

Hal will be discussing Baker to Vegas in detail later in this newsletter, but I wish to thank all of those who participated with us providing communications for the Baker to Vegas run last weekend. It's my understanding that our local team was able to beat their goal and I'm certain that our communications were a part of their success.

One of the best ways to maintain a viable club is to keep up a level of activity. To this end, we need to maintain communication. What would we all like to see as pertinent program content throughout the coming months? What aspects of our hobby should be highlighted over time? What should be our direction?

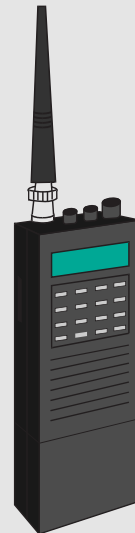
By all means, all of us are open to new ideas and who knows? You too might get the opportunity to share your particular interest with us so we can all benefit.

TCARC is not just the officers, it's all of us. As we think about material to present through the year, your ideas are not only welcome, but sincerely sought. Let us know what our TCARC can do to enhance your ham radio experience.

So have a great month and we'll see all of you at our next TCARC meeting, April 27, 1930 hours at the county civic center.

Best of 73's.

Dave WA6BEF.



Club Websites:

The mailing lists available for TCARC are:

- gridleak@tcarc.net - Grid Leak distribution in Portable Document Format (PDF)
- gridleak-text@tcarc.net - Grid Leak distribution in text format for those who prefer or require it.
- tcarc-announce@tcarc.net - One-way announcements open to all
- members@tcarc.net - Open to all active members
- repeater@tcarc.net - New repeater committee list (committee members only)
- officers@tcarc.net - For officers

If anyone wishes to start a new list related to amateur radio or the TCARC, you may do so by sending me an e-mail. -- 73 de Ray KF6KMY

Emergency Coordinators:

Emergency Coordinators for Tulare County:

RACES is Jim Reeves KC6YRU -
kc6yru@tcarc.net

ARES is Hal Clover KC6LUB -
hal90000@sosinet.net

Tulare County Amateur Radio Club

TCARC Minutes from March 23, 2006

Meeting called to order at 1935 by President Dave McElroy WA6BEF at the Tulare County Board of Supervisors Chambers, 2800 W. Burrell in Visalia.

Those present:

1. **WA6BEF** Dave McElroy
2. **WA2RQK** Pam Drake
3. **K6QOG** Bill Stenger
4. **WA6SAA** Chuck Ward
5. **KE6YJC** Ted Freitas
6. **KC5LUB** Hal Clover
7. **WA7HRG** Jim Purvis
8. **KF6KMY** Ray Quinn
9. **N6YMM** Dave Millhouse

Treasurer Dave Millhouse N6YMM gave the treasurers report. At the beginning of the month, the Club had \$704.91. Income included \$65 in memberships, \$250 from the sale of a tower, and \$5 in petty cash. Leaving \$1024.91 in the Club's treasury. Dave also mentioned that he paid the Club's post office box on February 28th, 2006. This amount will also be taken out of the treasury.

Jim Purvis WA7HRG motioned to accept the treasurer's report. It was seconded by Pam Drake WA2RQK. The vote was unanimous in the affirmative.

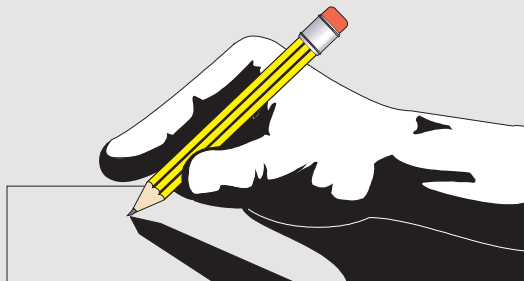
Dave Millhouse N6YMM motioned that the minutes of the February 23, 2006 meeting be approved as published in the Grid Leak. Pam Drake WA2RQK seconded it. The vote was unanimous in the affirmative.

Activities Director Hal Clover KC5LUB gave us an update on the preparations for the Baker to Vegas Run on April 1, 2006.

Dave Millhouse N6YMM gave a presentation on EMP. Discussion followed as to how to protect your station from EMP and lightning.

Ted Freitas KE6YJC motioned to adjourn. Pam Drake WA2RQK seconded it. The vote was unanimous in the affirmative. The meeting was adjourned at 2055.

Respectfully submitted by Ray Quinn KF6KMY



April Birthdays:

N6YMM Dave Millhouse
KA6HGA Bill Shearer

May Birthdays:

WD6CNV Roger Corum
W6ARE Edgar Cowley
N6QBK Chuck Wilcox

May Anniversaries

WD6CNV Roger & **WD6FUF** Sarah Corum
KE6UKK Frank & Phyllis Devin, Jr
KA6HGA Bill & Yoko Shearer

Tulare County Amateur Radio Club

SAN JOAQUIN VALLEY SECTION Report for the month of March 2006

SM Charles McConnell, W6DPD- ASMs K6YK and W6FRH, ACC W6DPD, SEC N6ZFN, OOC N1VM, STM K6RAU, PIC KE6IGJ, TC W6TE.

Greetings from the ARRL San Joaquin Valley Section.

An Emergency Coordinator is needed in Merced County. Contact N6ZFN (n6zfn@bak.rr.com) or W6DPD (w6dpd@arrl.org) if you can help

Mark your calendars. The International DX Convention is April 21-23, 2006 at Visalia. Check <http://www.dxconvention.org/> for information. EMCOMM West is May 6-7, 2006 at the Atlantis Casino Resort in Reno. Check www.emcommwest.org for information.

Field Day is June 24-25, 2006. The 64th Fresno Hamfest will be August 5, 2006 at the Satellite Student Union on the CSUF Campus.

Check www.w6to.com for information. San Joaquin Valley ARS presents the Harvest HamConVention Sept 15-16 in Fresno. Check www.sjvars.com for information. Pacificon 06 will be October 13-15, 2006 at the San Ramon Marriott. Check www.pacificon.org for information.

When your affiliated club elects officers for the next year, be sure to update your club's information on the affiliated club area of the ARRL web page.

Need to take an Amateur exam? Check the ARRL web page, www.arrl.org for exam information. You can also search for Amateur Radio Classes in your area.

The Northern California Net (NCN), the Section Traffic Net, meets nightly on 3.630 MHZ at 7 PM Pacific Time. The slow speed training session of the net meets nightly on 3.705 MHZ at 9 PM Pacific Time. Handling traffic on CW is a good way to improve your CW skills. The Daytime Region 6 Traffic Net meets daily at 3:30 pacific time on or near 7.275 MHZ. The California Traffic Net meets daily on 3.906 MHZ and 6:30 PM local time.

It is my sad duty to report that W6JPU, WA6NSY, WA6BPP, KA6SDH, and KA6GCA are Silent Keys. They will be missed.

On June 9-11, KF6JOQ, Larry, KG6ZBL, Mark and W6WTG, Terry will be going to Santa Cruz Island off the coast of Ventura for a DX Expedition. The island is IOTA NA-144. We will be operating 14.260 and also 144.210 SSB during the ARRL VHF contest.

QSL Manager is N2OWL. For more information contact Terry, W6WTG at w6wtg@arrl.net or www.islandchaser.com.

The Turlock ARC and Stanislaus ARA provided communications for the McLane Pacific 100 Mile bike race.

The Turlock ARC and K6IXA conducted an Airmail/Winlink seminar with over 50 in attendance.

The Madera Amateur Radio Club will celebrate its 50th Anniversary in 2006.

The Central California DX Club will celebrate its 25th Anniversary in 2006

W6RFL made the DXCC Honor Roll.

W6FRH qualified for WAS by using contacts in Log Book of the World.

Top SJV Scores in the 2005 ARRL CW DX Sweepstakes were 1st WC6H, 2nd N6EE and 3rd K2VCO. Way to go guys.

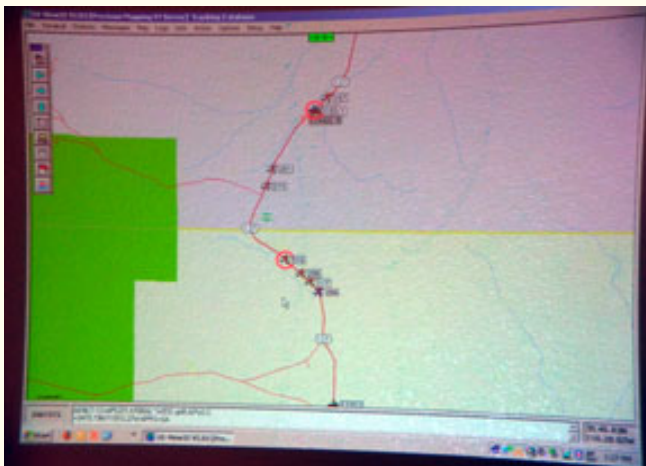
Traffic for March: K6RAU 20 and N6SUZ 129; Total 149. PSHR K6RAU 20, N6SUZ 100.

Baker2Vegas Run, March31-April 2, 2006



PRIMM Control Center

Dave WA6BEF, with computer on his lap and 2m rig by his side, handled communications from the Catcher car.



PRIMM Control Center

APRS MAP projected into the wall in the Control Center showing the location of the runners and the Catcher vehicles. Projection provided easy viewing of the race for Tulare County Officials.



PRIMM Control Center

Technology at it's finest. KC6YRU Jim and KE6YJC Ted computers at work with AD6N Tom keeping a written log.

From the Editors: If there is anything that you would like to add to the newsletter, you may contact us by email at stengerw@sti.net. The deadline to have articles included is the 10th of each month; submissions after the 10th will go in the next newsletter unless otherwise instructed.

-- de Carol & Bill K6QOG

TULARE COUNTY AMATEUR RADIO CLUB, INC. MEMBERSHIP APPLICATION

NAME (Self) _____ NAME (Family Member) _____

CALLSIGN (Self) _____ CALLSIGN (Family Member) _____

ADDRESS _____

CITY _____ STATE _____ ZIP _____

EMAIL _____

LICENSE CLASS (Self) _____ LICENSE CLASS (Family Member) _____

RES PHONE _____ BUS PHONE _____

EQUIPMENT _____

BANDS _____

INTERESTS (Please Check)

EMERGENCY SERVICE

RAG CHEWING

BUILDING

TRAFFIC HANDLING

Dxing

ANTENNAS

CINTESTS

QRP

OTHER

DESCRIBE _____

SIGNATURE _____

Membership Dues: (\$20.00 - Individual - \$25.00 - Family)

Mail To:
Tulare County Amateur Radio Club
P.O. Box 723
Visalia, CA 93279